



It is hard to believe that there is only one month to go until Christmas time.

These last weeks are some of the busiest in the schools' calendars, but the festivities always provide a great opportunity to enjoy the close relationships we have with our school families and the wider community around us. Our key dates have been updated and we look forward to seeing many of you during this jolly season.

We are always grateful for the amazing work that the PTA do for our schools. Next weekend is one of the biggest events of their calendar year when they will be hosting our Christmas Fayre at the Junior School from 1-4pm. Admission is free and we look forward to seeing lots of your familiar faces at the event.

Whilst we start to enjoy these merry times, it is important to reiterate some housekeeping rules so please do remember the importance of good attendance, completing homework and returning their reading books into school and in good condition. As the weather turns colder, winter bugs become more prevalent in school. Please make sure that if your child falls ill that you follow the guidance from Public Health England and keep them at home and join us in reminding them to wash their hands regularly.

We are very lucky to be able to offer a wide array of external clubs across both schools each term. This term is no exception from tag rugby and netball to art club and sewing. We have even seen a breakdance flash mob on the Junior playground. Please have a look at the club page on the school website [here](#) where we sharing what they are up to. Details of booking for next term will be coming out soon and most clubs will also be open to the Reception class too.



On Saturday 16th November St Mary's Church held its annual concert, which was a sell-out. The Junior School Choir performed alongside the Wargrave Community Choir, Appollo 5, solo singers and musicians. The children were fabulous and hopefully enjoyed every minute. A video of them performing is on our celebrations page on the school website [here](#). This is a page where we share events in the pupils are involved in both at school and in the community.





Opportunities to gather together for reflection and worship are crucial for every one of us, but they are the lifeblood of a church school. Both schools held services to commemorate the men and women who gave their lives for their country. We recognise that war still rages in parts of the world today and directly affects some of our own school families. Andy Ferguson, led assemblies at both schools and was joined at the Junior School by Michael Simpson, a retired Army captain. Children read poems, led their school community in prayers and displayed the poppy artwork which had been completed in both schools.



In keeping with our School ethos and vision, we wish to donate to the community and the School Council are keen to continue our tradition of supporting The Salvation Army's Christmas Present Appeal. Every year, we hold a gift giving ceremony at the Infant School and this year is no different. The Salvation Army will come in on Monday 9th December in the morning and collect the gifts. There is a video explaining why it's so important to support others at Christmas time on the School Council page [here](#) of our website. Gifts should be brought in to the Infant School on the morning of Monday 9th December (gift ideas can be found on The Salvation Army's website [here](#)). Presents should be unwrapped but with a label outlining the age the present would suit and if it's for a boy or a girl. We hope you will support us in this great cause.

Attendance

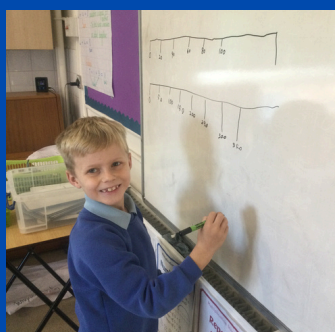
Infant School 96.8%
 Junior School 95.7%
 Attendance expectation 96%

The attendance for both schools has been improving and with your help and support we could reach the 96% mark by the end of term.

Should your child drop below 90% you will be notified by the School leadership team.

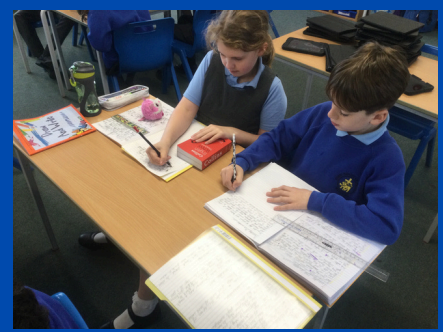


On Thursday 21st November Rabbi Zvi visited the pupils in Key Stage 1 at the Infant School to talk to them about the origins of Judaism.



It's not all fun and games at school, the pupils of Phase 1 have been hard at work continuing learning about Romans, working on their writing skills and becoming maths masters of number lines.

Ms O'Byrne says "keep it up!"



SPORTING UPDATE



November has seen a host of sporting fixtures for the Junior School.

On 7th November pupils from Years 3/4 participated in a Cross-Country event at Lightwater Country Park. They did really well and showed great courage throughout. The support of the parents at this event was greatly appreciated.

On 15th November pupils from Year 5/6 attended football tournament at Cantley Park. After some fantastic play, winning 7 out of their 8 group games, they got to the semi-finals and narrowly lost out on penalties.

On 20th November pupils from Year 3/4 went along to Maiden Erlegh School for a Sports Hall Athletics event. They took part in a variety of track and field events including javelin, long jump, vertical jump, sprinting, obstacle races and more. The children did really well, winning a couple of races along the way though we are yet to receive the final results of this event. Mrs Kelly attended the event with Mr Hawtin and her help on the day was invaluable.

Throughout November, Year 6 leaders have been working hard during a leadership course at The Holt School. This has involved them using leadership skills and working together to create an activity session that they then lead to groups of year 3 children from other schools. The children have shown maturity throughout and have been great examples for the younger children.



KEY DATES

Tuesday 26 th November from 3.15pm	Year 5/6 Girls' Football Tournament at Mumbery Hill (invitation)
Friday 29 th November 2.30pm	Woodpecker Class Collective Worship (Woodpecker parents invited)
Saturday 30 th November 1.00-4.00pm	PTA Christmas Fayre at Junior School
Tuesday 3 rd December from 3.15pm	Year 5/6 Boys' Football Tournament at Mumbery Hill (invitation)
Thursday 5 th December 12.00-3.00pm	Cross Country at Cantley Park (invitation)
Thursday 5 th December	Infant School to Pinocchio at Norden Farm
Friday 6 th December 8.00am	School Council meeting at Junior School
Friday 6 th December	Infant Christmas craft morning & tree decorating assembly
Monday 9 th December	Toy gift donations for Salvation Army assembly
Monday 9 th December	Phase 1 Nativity Dress Rehearsal
Wednesday 11 th December 5.00pm	Phase 1 Nativity (Year 3 & 4 parents invited)
Thursday 12 th December 2.30pm	EYFS Nativity Stable Exhibition (Doves parents invited)
Friday 13 th December	Reindeer Dash
Friday 13 th December	PTA Fundraiser Christmas Disco
Monday 16 th December	Interhouse Carol Competition (Juniors)
Monday 16 th December 2.00pm	Infant Nativity Dress Rehearsal (parents with toddlers/prams welcome)
Tuesday 17 th December	Junior School to Cinderella at Reading Hexagon
Tuesday 17 th December	Infant School Christmas Jumper Day and lunch
Wednesday 18 th December 9.30am	Infant Nativity (2 adults per child invited)
Wednesday 18 th December	Junior School Christmas Jumper Day and lunch
Thursday 19 th December	Reading Athletics Club Fitness Test at Junior School
Thursday 19 th December 6.00pm	Phase 2 Carol Service at St Mary's Church for Junior School
Friday 20 th December	Christingle at Infant School
Friday 20 th December	Term Ends Juniors 1.20pm Infants 1.30pm

SAVE THE DATE!

Christmas Fayre

SATURDAY 30th NOVEMBER

1-4pm

Robert Piggott Junior School

**SANTA'S GROTTTO, MINCE PIES,
MULLED WINE, CHRISTMAS CRAFTS,
FESTIVE STALLS & LOTS MORE!**

IN AID OF
THAMES VALLEY HOSPICE & ST MARY'S CHURCH

WARGRAVE PRESENTS
CHRISTMAS
ON
MILL GREEN

SATURDAY 7TH DECEMBER
4PM - 6PM

CHRISTMAS TREE LIGHTING
MUSIC | FOOD | DRINKS | RAFFLE
CHILDREN'S ACTIVITIES



FREE ENTRY

FUN FOR ALL THE FAMILY

WARGRAVECHURCH.ORG.UK/CHRISTMASONMILLGREEN

WARGRAVE PRESENTS
CHRISTMAS
ON
MILL GREEN
SATURDAY 7TH DECEMBER



With only a few weeks to go, we hope to see you down at Mill Green on Saturday 7th December. Here is a glimpse of what's in store and how you can join in the festive cheer.

We kick off at 4pm where we'll embrace the Christmas spirit with delicious treats like mulled wine, mince pies and hot dogs generously provided by our sponsors for a donation. Treat yourself to festive refreshments from our vendors, offering everything from craft beer and fine wine to comforting cups of tea, coffee, and indulgent hot chocolate.

Mill Green will come alive with festive music, leading up to the blessing of our magnificent six-meter Christmas tree, donated by local resident Graham Trolley. Join us at 5pm for the magical moment when the Christmas lights come alive! Gather around the tree and sing your favourite carols, accompanied by the uplifting sounds of a live brass band.

For children, we have the perfect mix of creativity and sparkle. There will be biscuit decorating and glitter tattoos which you can do throughout the event. There will also be a dancing competition. We ask that children dress to impress in their festive gear, whether that be jumpers, dresses or costumes.

We shall also have the Christmas Raffle featuring some fantastic prizes. Tickets are just £1 each and will be available for purchase in advance from St Mary's Church Office - Monday to Thursday, 9.30am to 1pm - and Sundays after the 9.45am service. Raffle tickets will also be sold on the day, announced shortly after the carols.

All donations will go towards Thames Valley Hospice and St Mary's Church.

With so much to look forward to, this promises to be an unforgettable start to the Christmas season, with Wargrave at the heart of it. Whether you're here for the festive treats, the joyful music, or the chance to connect with friends and neighbours, there's something for everyone to enjoy.

So wrap up warm, bring your loved ones, and join us for an evening filled with community spirit and Christmas magic. We can't wait to celebrate with you!



WARGRAVECHURCH.ORG.UK/CHRISTMASONMILLGREEN

Woodley Concert Band

Children's
Christmas
Concert

An hour of
festive music and fun!

Sunday 15th December
at 3pm, The Bulmershe
School, Woodley

www.woodleyconcertband.org.uk

A festive poster for an 'Elf Escapade' event. It features illustrations of Santa Claus, two elves, and a child. The text provides details about the event, including dates, times, entry fee, and location. A QR code is included for more information.

ELF ESCAPADE

14th DEC | 12pm-5pm

Last entry to trail at 4pm

Entry fee: £3

PICK UP YOUR MAP AND PUZZLE AT WARGRAVE PRE-SCHOOL TO FIND THE CHEEKY ELVES AROUND WARGRAVE

MULLED WINE, MUSIC, MINCE PIES & FESTIVE TREATS AVAILABLE ALL DAY

WANT TO CREATE AN ELF FOR THE TRAIL? SCAN HERE!

BIG PLAY DAY



Love playing your instrument with your class at school?

- ✔ Come and have fun making music with friends!
- ✔ Whether you know just a few notes or a few more, there's a part for you!
- ✔ Show off your skills in a performance for your parents!

Saturday, 23 November

Workshops: 10:30am - 12:30pm
Performance: 12:30pm - 1:15pm

Tickets: £3

Bracknell Music Centre, Ranelagh School, RG12 9DA

Suitable for beginners learning with their class at school.
Bring your instrument and let's play together! 🎷

Learn your part with your teacher

Rehearse with the band on the day

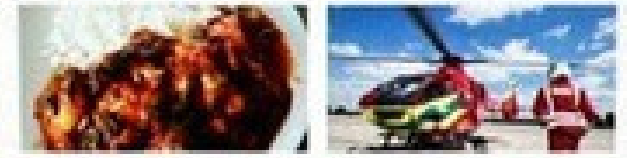
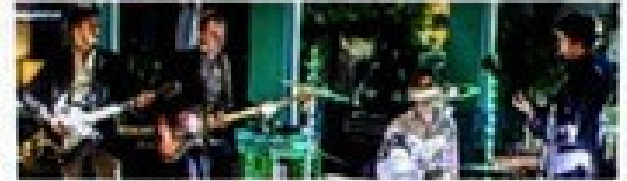
Perform at the end of the event



CLICK HERE OR
SCAN TO BOOK



FUN CASINO & LIVE MUSIC



Phenomenal live rock band Phantom Booth

7.30pm **SAT 30th NOV**

All profits to local causes

Croupiers / Bar / Cocktails
Evening Meal (pre-order)

Info and
online
booking



Tickets £25 Woodclyffe Hall, Wargrave

10

CONSTRUCTION SAFETY TIPS FOR KIDS!

Follow the tips below to protect yourself from any dangerous construction zones you may encounter in your neighbourhood!



#1 DON'T PLAY IN CONSTRUCTION SITES Please don't walk, run, hide or play in a construction area (dirt piles, around construction equipment, etc.)

#2 USE SIDEWALKS Always walk on the sidewalk or designated walkway.

#3 AVOID DISTRACTIONS Do not use cell phones, headphones, video games or other hand held devices in construction zones.

#4 AVOID CONSTRUCTION SITES When possible, don't go near a construction zone, as heavy machinery and debris can hurt you!

#5 BE AWARE OF CONSTRUCTION EQUIPMENT Stop, look and listen for construction vehicles like bulldozers and dump trucks, and protect yourself by staying out of their way!

#6 SEE AND BE SEEN Remember, you are smaller than most pieces of equipment and they may not see you, so make eye contact with drivers before going near equipment.



#7 READ SIGNS Slow down and follow signs that tell you where to walk, skateboard or bicycle.

#8 BE AWARE OF FALLING OBJECTS Work on construction sites can take place at higher levels and this can sometimes cause objects to fall and bump you on the head...ouch!

#9 OBEY THE RULES Always listen to any instructions given by those working on the construction site. If they say you can't be there, then leave the area immediately, as you could get hurt by staying!

#10 STAY OUT Stay outside of orange cones, construction fences and chain link fences.

Get the THUMBS UP



Don't get knocked down!



Ensure plant
operators know
you are there